



What does EDF do?



The European Union is very important for everybody in Europe.



The European Union is a group of European countries working together to give a better life to the people living in Europe.

We use “EU” as short for “European Union”.

[Click here to see which countries are in the European Union.](#)



The EU writes laws and takes important decisions.

The work of the EU creates changes in the lives of people living in Europe.



EDF makes the work of the EU better.

EDF talks to the people of the EU to make sure they do not forget disabled people.

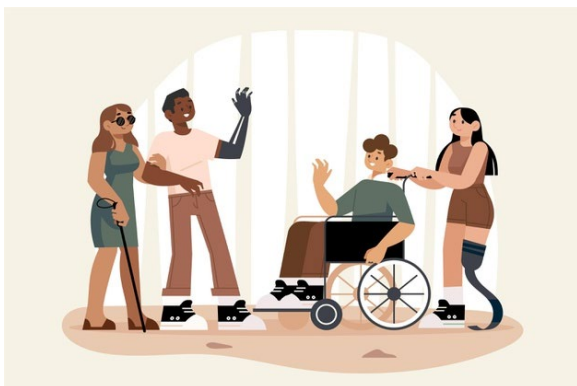


EDF proposes the EU new laws.

These new laws will make the lives of disabled people better.



For example, EDF worked with the EU on a law against discrimination. EDF wants the rights of disabled people to be respected in all European countries.

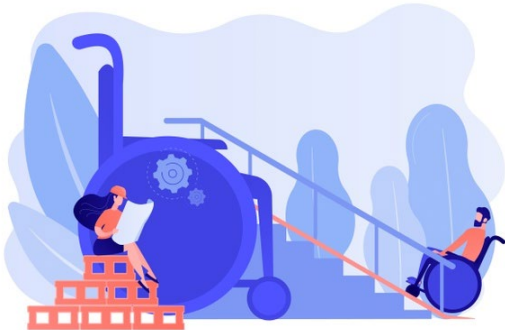


This means that

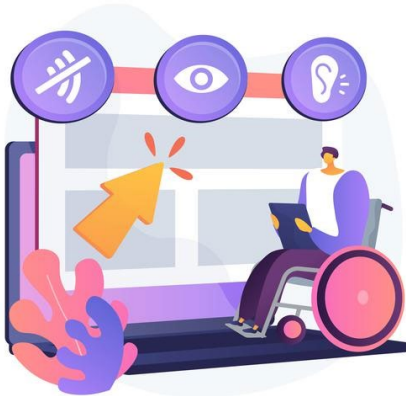
- disabled people should not be discriminated against anymore



- disabled people have the right to work
- disabled people have the right to make decisions about their own life



- buildings must all be accessible for disabled people for example with lifts or ramps for wheel chair users



- things like TV, internet and mobile phones must be accessible for disabled people



In education,
disabled people have the
right

- to good education
- to lifelong learning,
which means learning
things during your whole
life
- to choose which school
they want to go to
- to be able to study
abroad
- to get books and
material in an accessible
format.

This means for example

- books in easy-to-read
for people with
intellectual disabilities
or

- books read out loud on
tapes for people who
cannot read.



- to ask the teachers to
give lessons and
material
which are accessible.



In transport, it means that

- all transport must be accessible for disabled people
- the information about the time and about the place of departure and arrival must be given in an accessible form
- support staff must be available to help disabled people when they need it. For example someone must be available at the station to help disabled people find the right platform.
- drivers and all staff working in the transports need to be trained to speak with and help disabled people

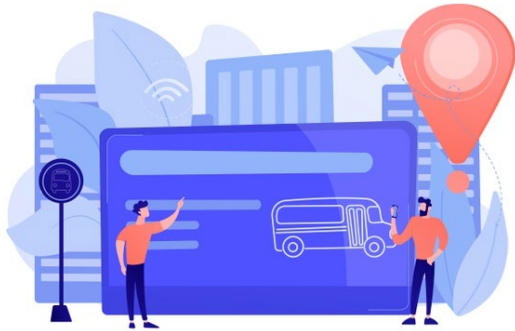


Image credits: Freepik.com